

## A NEW SPECIES OF ANTHOCORIDAE FROM NEW CALEDONIA\* (INSECTA : HETEROPTERA)

Isamu HIURA

The Osaka Museum of Natural History

### *Buchananiella novaecaledoniae* n. sp.

Colour brownish black or chestnut-brown; antennae brownish black, last segment light and reddish; pronotum totally brownish black; scutellum chestnut-brown; apex of middle segment and last segment of rostrum yellow; clavus, corium and embolium stramineous basally; apical two fifth of embolium, apical part of corium, and apex of clavus along the claval commissure brownish black; membrane smocky dark grey; femora brownish black, basal parts of tibiae brown, the rest of tibiae and tarsi light brown or stramineous.

Body elongate, parallel sided, covered with light hairs.

Head subcolumnar, moderately long, smooth; length excepting neck slightly longer than width including both eyes; antecular portion as long as an eye; vertex a little narrower than twice of an eye; eyes large and prominent. First segment of antennae stout, just reaching the apex of head; second segment incrassate, shorter than width of head with eyes, densely covered with short hairs; last two segments spindle-formed, slender than the second, the fourth a little longer than the third, hairs on last two segments sparse and as long as the diameter of the segments; antennal proportions are I : II : III : IV = 9 : 25 : 13 : 15 (94 units 1 mm.). Rostrum stout and short, slightly beyond the anterior margin of pronotum.

Pronotum comparatively long and narrow, basal margin longer than twice of the median length; apical annulus long and distinct; sides straightly narro-

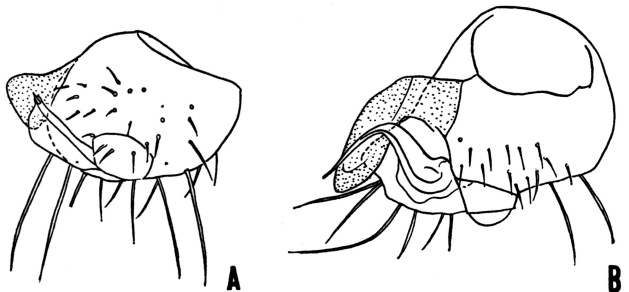


Figure 1: Male pygophore, dorsal aspect...*Buchananiella novaecaledoniae* n. sp. (A, paratype from Vao, Ile des Pins, New Caledonia) and *B. continua* (B. WHITE) (B, from Picton, New Zealand)

wed forwards; the lobe outside of the callus very narrow; callus smooth, posteriorly and laterally demarcated by distinct impressions; the posterior disc coarsely rugose and punctate, in the middle a little impressed; posterior margin deeply concave. Scutellum flat, wider than long; shallowly impressed medially with a pair of distinct foveae.

Clavus coarsely punctate; embolium apically about one third the width of the apex of corium, lateral margin straight, shorter than twice of cuneal length; membrane with three parallel veins, innermost vein without triangular space at the base.

The rima orificiorum of metasternum broad, shortly curved backwards at apex, the longitudinal lateral keel almost straight and fairly remote from the apex of the rima. Femora smooth and slender, cylindrical, without particular arms.

Length: 2.0mm.; width: 0.6 mm.

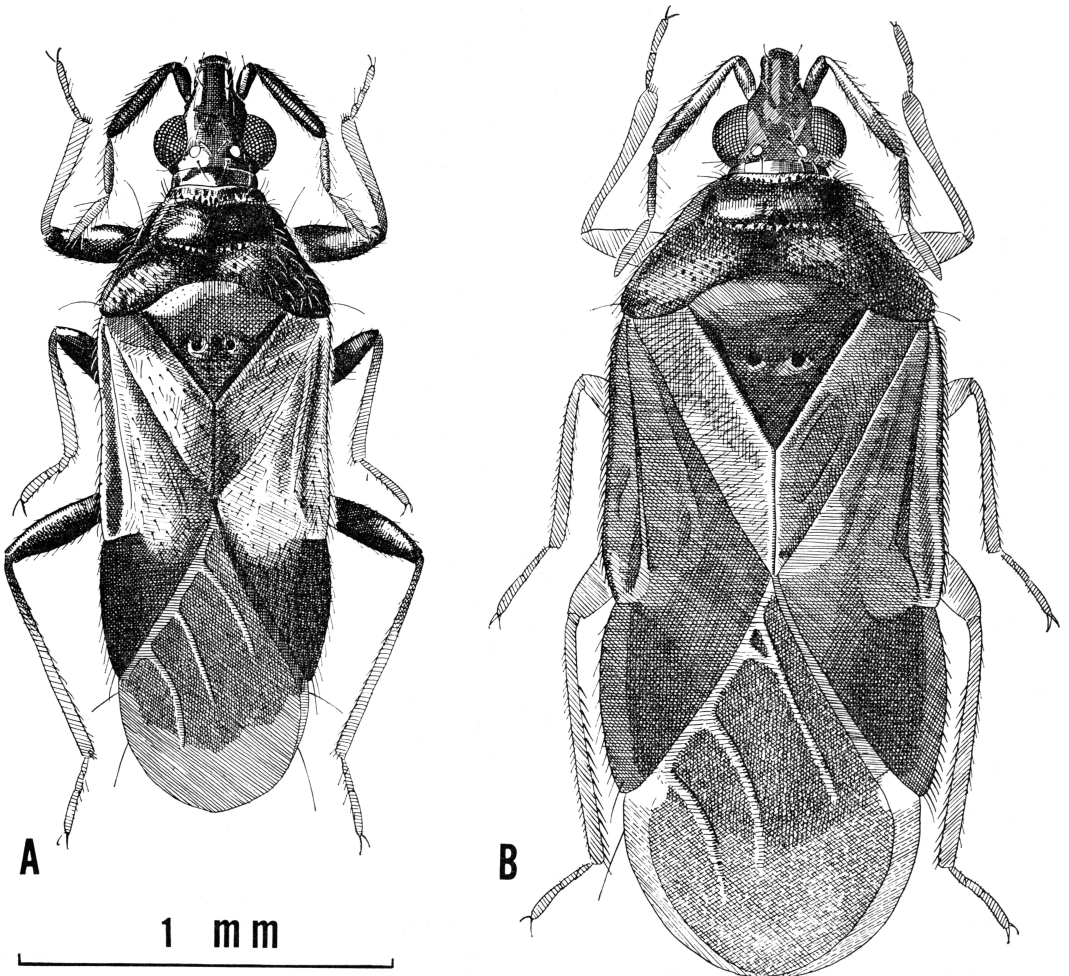


Figure 2: General aspect...*B. novaecaledoniae* n. sp. (A) and *B. continua* (B. WHITE) (B)

Holotype ♀, paratopotypes 1 ♂ 2 ♀, Vao, Ile des Pins, New Caledonia, 10-11. xi. 1958 Y. Shibata leg. Paratype: 1 ♀, Koghis, New Caledonia, 12. x. 1958 Y. Shibata leg. Other examined specimen: 1 ex., (abdomen lost), Riviere Bleue, Yaté R., New Caledonia, 3. x. 1958 Y. Tsutsui leg.

Present new species resembles to *Buchananiella sodalis* B. WHITE (tropicopolitan) and *B. anulata* CARAYON (Cameroon), but differs from them by the shorter parameroid process and knife-like paramere of the male genitalia.